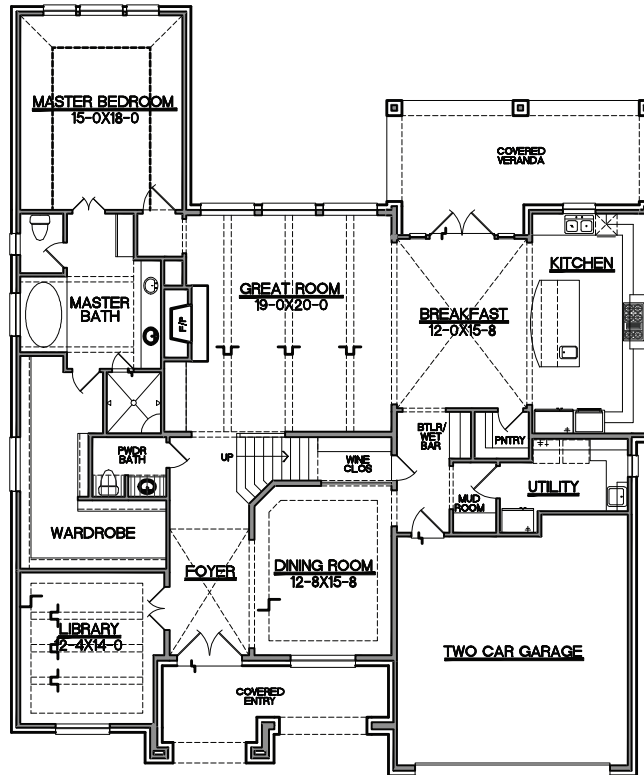


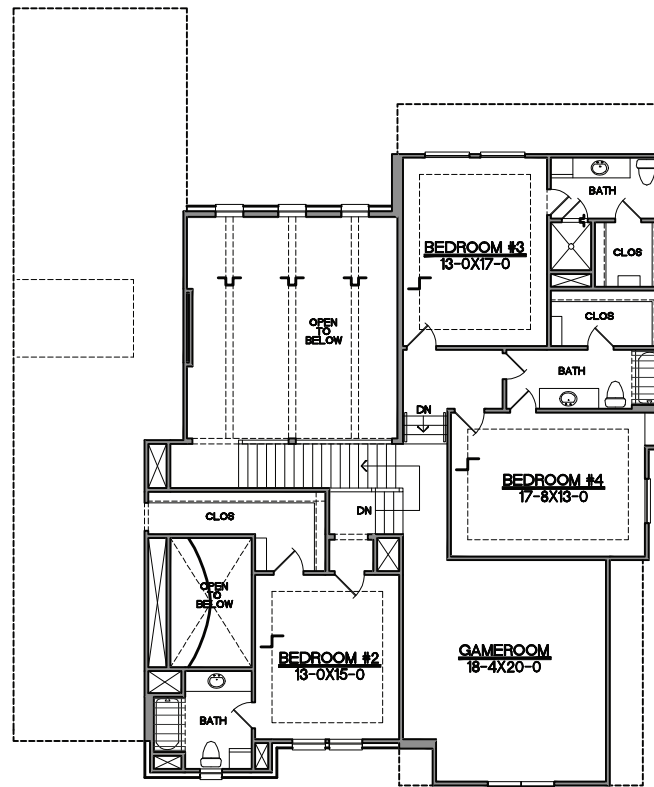
**PLAN 4166**

4 BEDROOMS | 4.5 BATHS | 2-CAR GARAGE

4166 SQ. FT. TOTAL



FIRST FLOOR



SECOND FLOOR

IN A CONTINUING EFFORT TO IMPROVE THE HOMES WE BUILD, PRINCETON CLASSIC HOMES RESERVES THE RIGHT TO CHANGE PLANS, PRICING AND SPECIFICATIONS WITHOUT NOTICE.  
EFFECTIVE DATE 11/13/12

**13907 SAINT MARYS LN, HOUSTON, TX 77079**