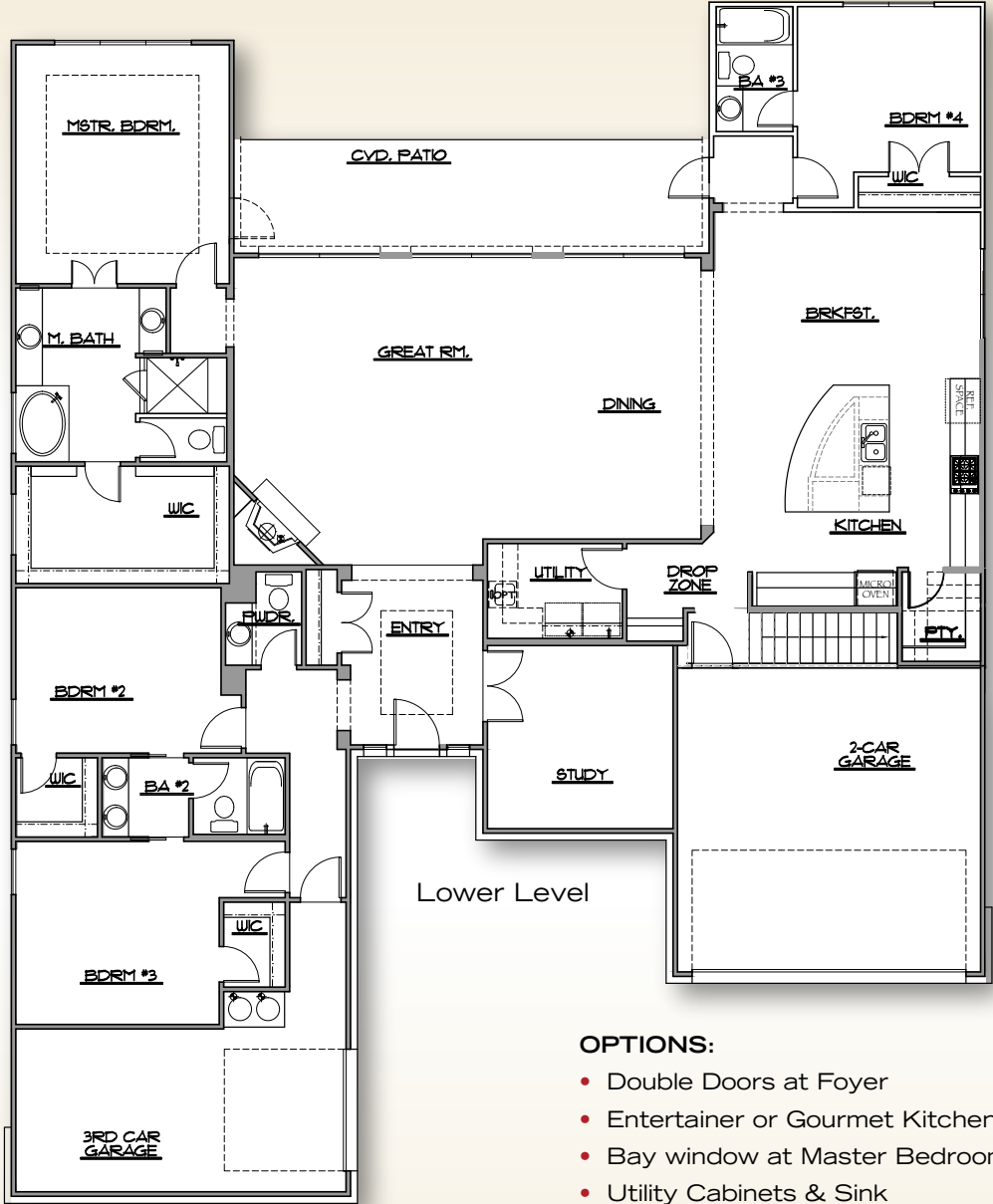


The Bairnsdale II

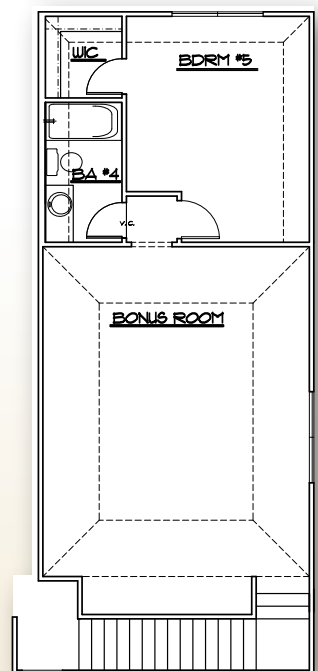
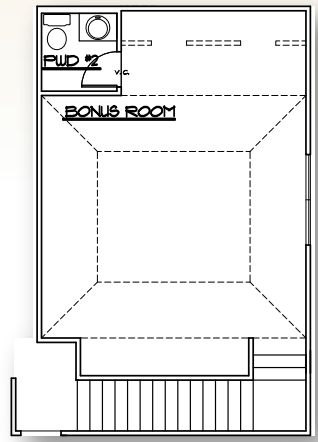


OPTIONS:

- Double Doors at Foyers
- Entertainer or Gourmet Kitchen
- Bay window at Master Bedroom
- Utility Cabinets & Sink
- Extended Covered Patio / Outdoor Living Area
- Outdoor Fireplace & Kitchen Options
- Wet Bar at Bonus Room
- Bedroom #5 and Bath #4 at Bonus Room

In a continuing effort to improve the homes we build, Princeton Classic Homes reserves the right to change plans and specifications without notice. All square footage and dimensions are approximate. Front windows will vary per elevation. Overall square footage may vary depending on specifications of community.

Upper Level



OPTIONAL Bedroom #5 and Bath #4